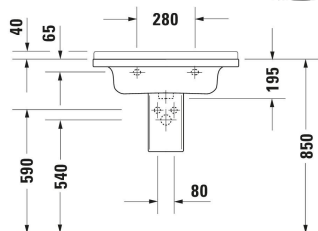
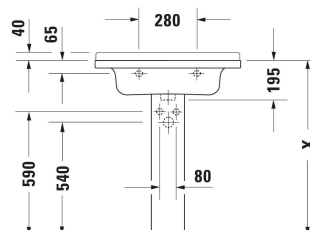
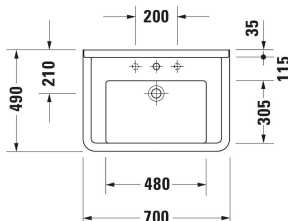


**Starck 3 Washbasin # 0304700000**

| &lt; 700 mm &gt; |



Washbasin	Dimension	Weight	Order number
Rectangular, Tap hole platform: Yes, Back side glazed: No, 700 mm			
<b>Colors</b>			
00 White Alpin			
<b>Variant</b>			
<ul style="list-style-type: none"> <li>White High Gloss, Number of washing areas: 1 Middle, Number of faucet holes per wash area: 1 Middle, Overflow: Yes</li> </ul>	700x235 mm	19.200 kg	0304700000
<b>Infobox</b>			
Space-saving siphon is recommended in conjunction with vanity unit			
Sanitary ceramics with the special WonderGliss surface finish will remain clean and attractive-looking for a long time to come. When ordering WonderGliss please add a "1" as eleventh digit to the model number.			
<b>Accessory</b>			
Space-saving siphon White, Connection dimensions: 1 1/4"	360 x 390 mm	0.372 kg	005076
Push-open waste Suitable for washbasin with overflow, Ø 63,5 mm	Ø 63.5 mm	0.34 kg	005052
<b>Suitable products</b>			
Pedestal Type of mounting: Floorstanding, 150 x 210 mm	150 x 210 mm		086516
Siphon cover Type of mounting: Wall-mounted, 170 x 315 mm	170 x 315 mm		086515

**Starck 3 Washbasin # 0304700000**

| &lt; 700 mm &gt; |

Vanity unit wall-mounted Number of pull-out compartments: 1, Handle Silver, Soft self-closing automatic with damping, Lay-in compartment Optional, Necessary articles: Washbasin Starck 3 # 030470, 650 x 455 mm	650 x 455 mm	KT6663
Vanity unit wall-mounted Number of drawers: 2, Handle Silver, Siphon cut-out: Yes, Siphon cover: Yes, Soft self-closing automatic with damping, Lay-in compartment Optional, Necessary articles: Washbasin Starck 3 # 030470, 650 x 455 mm	650 x 455 mm	KT6643
Vanity unit wall-mounted Number of pull-out compartments: 1, Without handle, Soft self-closing automatic with damping, Tip-on fitting, Interior system Optional, Necessary articles: Washbasin Starck 3 # 030470, 670 x 469 mm	670 x 469 mm	LC6164
Vanity unit wall-mounted Number of drawers: 2, Without handle, Siphon cut-out: Yes, Siphon cover: Yes, Soft self-closing automatic with damping, Tip-on fitting, Interior system Optional, Necessary articles: Washbasin Starck 3 # 030470, 670 x 469 mm	670 x 469 mm	LC6264
<b>Recommended faucets</b>		
Single lever basin mixer M Ceramic cartridge, Height: 175 mm, Spout reach: 113 mm, Spray mode: Normal spray, Aerator adjustable, recommended operating pressure: 1 - 5 bar, Noise class: I, Handle version: lever handle, 143 x 41 mm	143 x 41 mm	C11020001
Single lever basin mixer M Chrome, Ceramic cartridge, Height: 170 mm, Spout reach: 139 mm, Spray mode: Normal spray, Aerator adjustable, Temperature limit adjustable, recommended operating pressure: 1 - 5 bar, Noise class: I, Handle version: lever handle, 175 x 41 mm	175 x 41 mm	B11020001
Single lever basin mixer M Chrome, Ceramic cartridge, Height: 165 mm, Spout reach: 138,5 mm, Spray mode: Normal spray, Aerator adjustable, Temperature limit adjustable, recommended operating pressure: 1 - 5 bar, Noise class: I, Handle version: lever handle, 175 x 41 mm	175 x 41 mm	B21020001
Single lever basin mixer L Ceramic cartridge, Height: 262 mm, Spout reach: 136 mm, Spray mode: Normal spray, Aerator adjustable, recommended operating pressure: 1 - 5 bar, Noise class: I, Handle version: lever handle, 166 x 40 mm	166 x 40 mm	C11030001
Single lever basin mixer S Chrome, Ceramic cartridge, Height: 125 mm, Spout reach: 95 mm, Spray mode: Normal spray, Aerator, Temperature limit adjustable, recommended operating pressure: 1 - 5 bar, Handle version: lever handle, Unified Water Label (UWL) Class: 1, 137 x 43 mm	137 x 43 mm	A11010002
Single lever basin mixer M Chrome, Ceramic cartridge, Height: 167 mm, Spout reach: 107 mm, Spray mode: Normal spray, Aerator, Temperature limit adjustable, recommended operating pressure: 1 - 5 bar, Handle version: lever handle, Unified Water Label (UWL) Class: 1, 149 x 43 mm	149 x 43 mm	A11020001
Single lever basin mixer M Chrome, Ceramic cartridge, Height: 167 mm, Spout reach: 107 mm, Water connection: Flexible connecting hoses, 3/8", Spray mode: Normal spray, Aerator, Temperature limit adjustable, recommended operating pressure: 1 - 5 bar, Handle version: lever handle, Unified Water Label (UWL) Class: 1, 149 x 43 mm	149 x 43 mm	A11020002

*All drawings contain the necessary measurements which are subject to standard tolerances. They are stated in mm and are non-binding. Exact measurements, in particular for customised installation scenarios, can only be taken from the finished piece.*